

CONTINUOUS DIGITAL TRANSFORMATION

Sustainment Working Group Bloom Technology

point3D

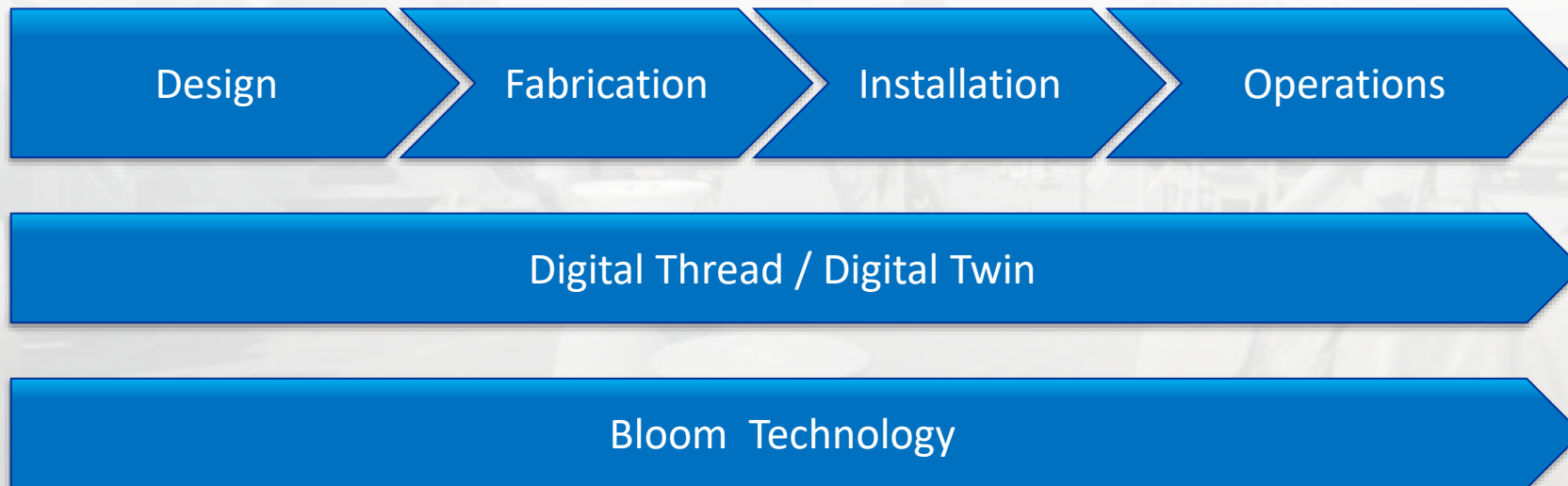
Laser Scanning Hardware, Software,
Training, Support, and Services

point3D.com | info@point3D.com | 800-616-1003



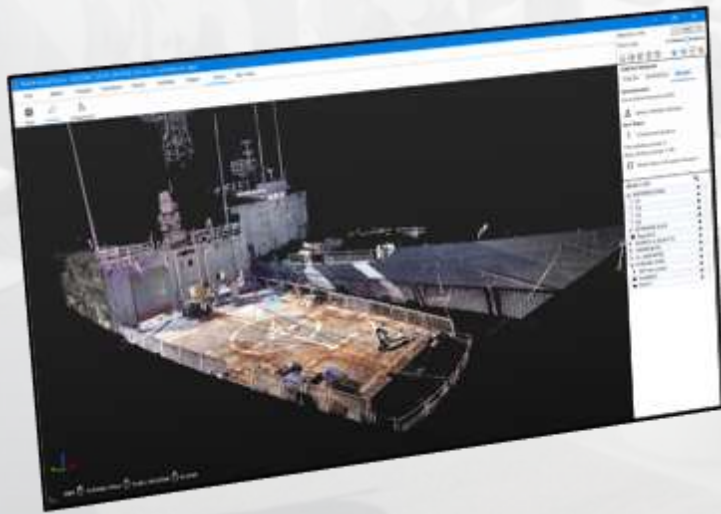
Plans for Sustainment

The Sustainment Panel mission is to reduce the cost of ship logistics and sustainment activities while increasing operational availability. Focus on advancements that realize greater efficiencies in lifecycle sustainment. <https://www.nsrp.org/sustainment/>

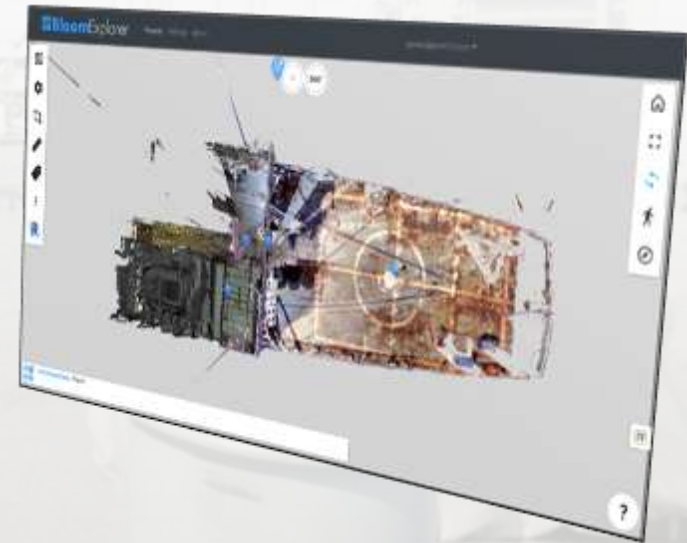


Bloom Technologies

Bloom Cloud Engine
Desktop Application

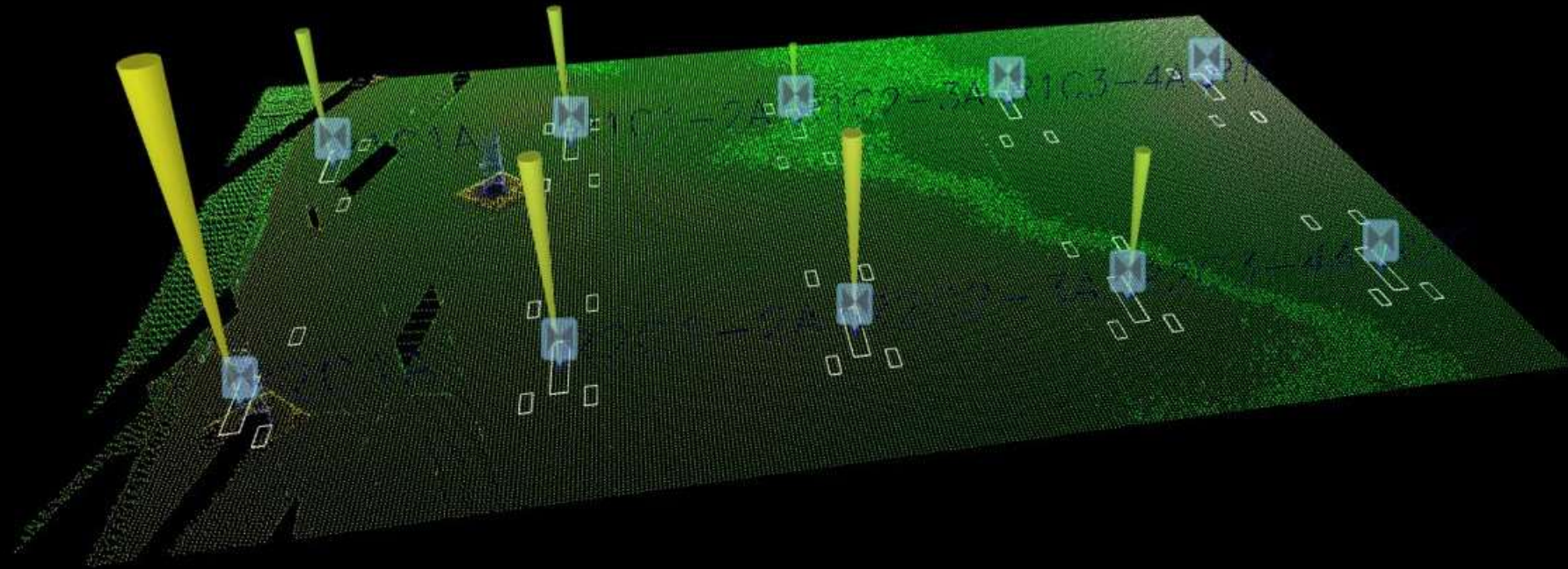


Bloom Explorer
On-Premise - Cloud - SaaS



Lifecycle – Digital Twin – Asset Management - Upgrades

First Introduction of Bloom to Shipbuilding Point Clouds for QA



Module QA, Deck Flatness, Reverse Engineering



to select, Long-press to get menu



The US Navy's Introduction To Bloom Technologies

*Zumwalt Destroyer Needs New Engine After
Turbine Blades Damaged in Sea Trials*

Equipment Removal Planning

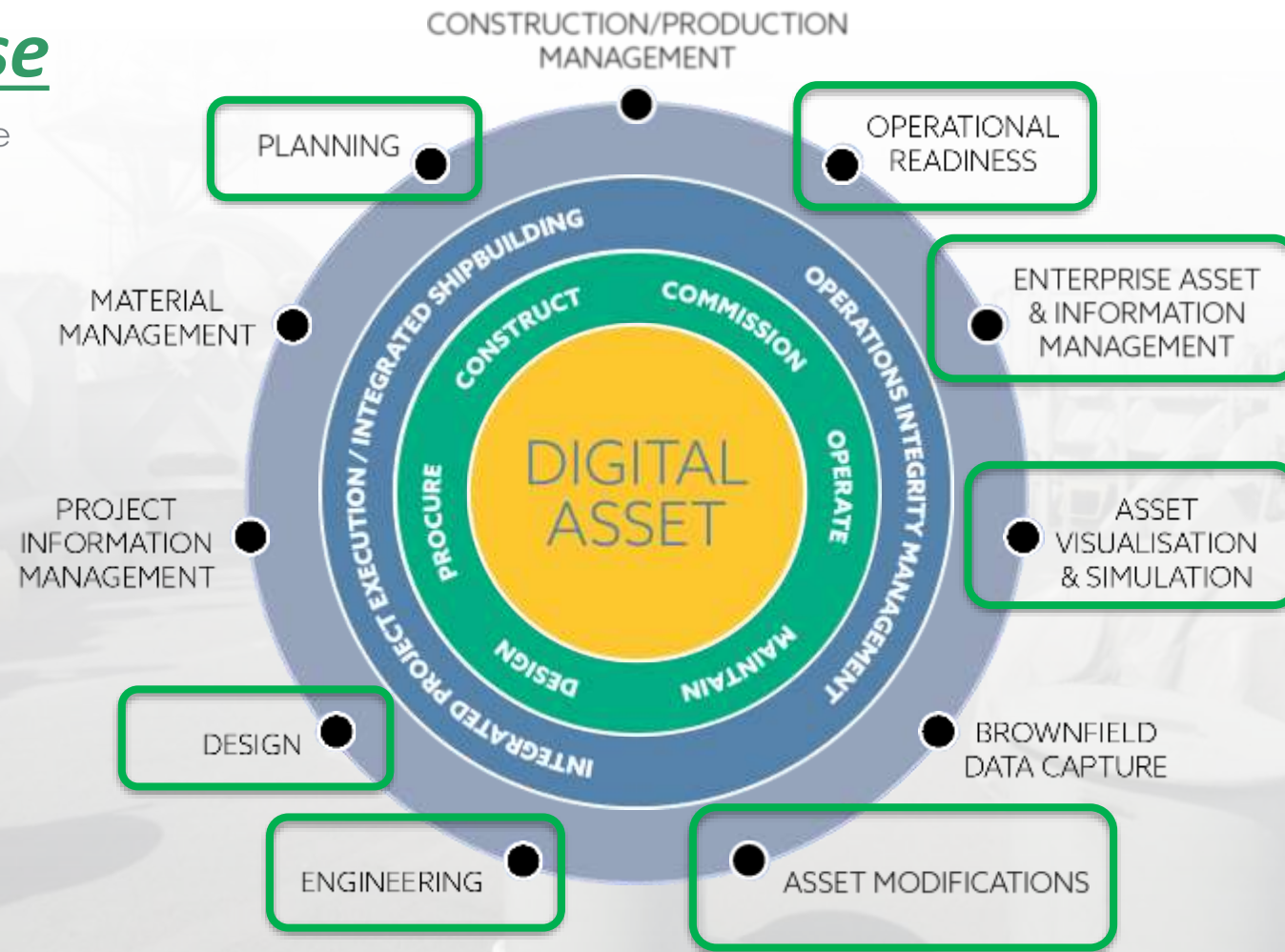
MT30 in 2010. Rolls-Royce Photo

<https://news.usni.org/2018/07/11/second-zumwalt-destroyer-needs-new-engine-turbine-blades-damaged-sea-trials>

Digital Asset Lifecycle

Lifecycle Use

Bloom Cloud Engine
Bloom Explorer

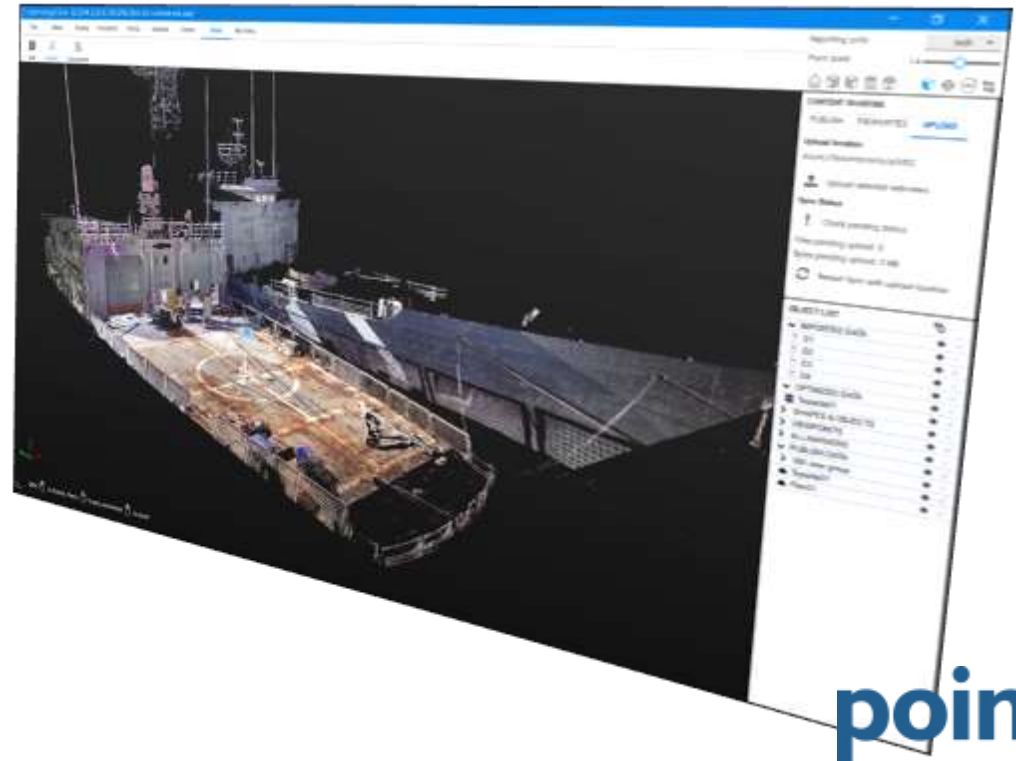


Bloom Cloud Engine

Overview

Bloom Cloud Engine is a new way of working with point clouds where you can manipulate points like objects, group them like layers, and simulate construction activity.

- Point Cloud Edit and Analysis
- Point Cloud Management
- Integrations (Autodesk)
- Publish to Bloom Explorer
 - Secure Cloud Portal (Azure)
 - On-Premise Storage (File)



PROJECT

Now showing 0 of the 26.4 M available points.

Selection point: Project Coordinates

XYZ ftXYZ range

OBJECT LIST

| IMPORTED DATA | |
|---------------------|--|
| MK 2022- Focsle 002 | |
| MK 2022- Focsle 003 | |
| MK 2022- Focsle 004 | |
| Focsle 004 | |
| SHAPES & OBJECTS | |
| VIEWPOINTS | |
| ALL MARKERS | |
| PUBLISH DATA | |
| 360 view group | |
| 2022- Focsle 002 | |
| 2022- Focsle 003 | |
| 2022- Focsle 004 | |
| Ship_Focsle | |

Major Functions

- Project and File Management
- **Point Cloud Management ***
- Point Cloud Editing
- Display and View Controls
- Transformation (Move, Rotate)
- Transformation (Align)
- Point Cloud Management
- Validation (Clash, Analysis, Deviation)
- Create (Lines, Shapes, Tags)
- Measurement
- Sharing, Reuse, Collaboration



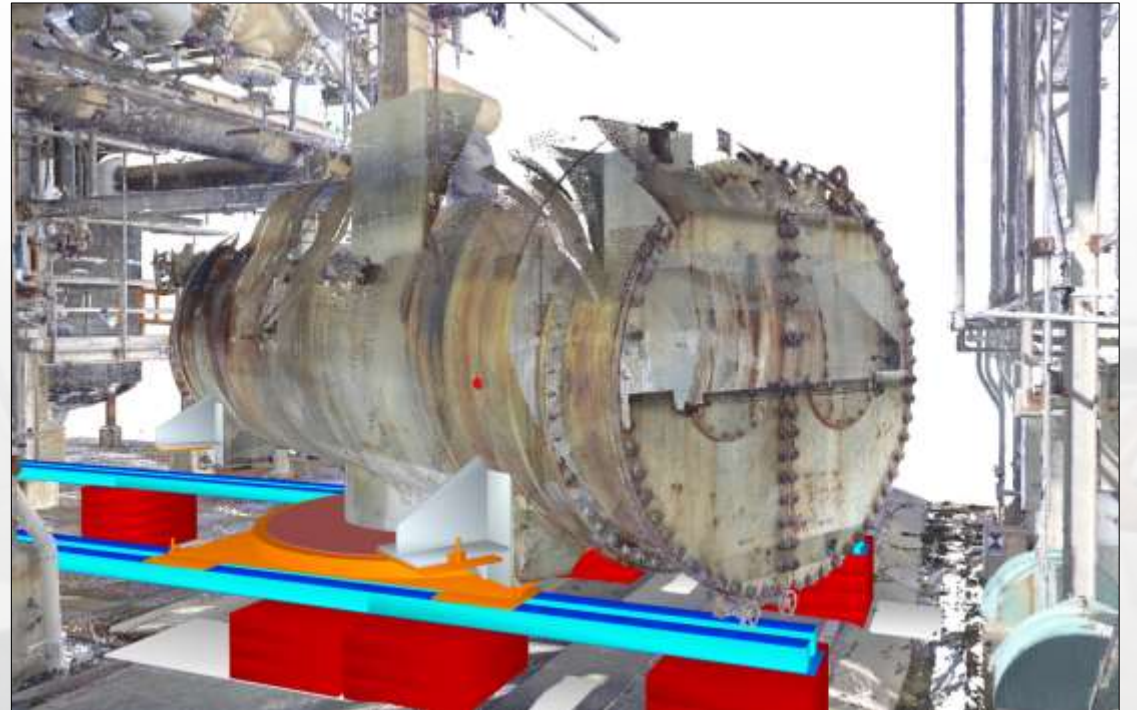
Ctrl+ to Rotate, Press to pan, and wheel to zoom



Lifecycle – Removal Planning

Advanced Applications

- Load Path Analysis
- Real-time interference
- Equipment Validation
- Manufacturing Validation



Load Path Pre-Removal

Pre-Removal Items

- Scaffolding
- Large Bore Piping
- Small Bore Piping
- Piping, Tubing, Conduit
- Misc.

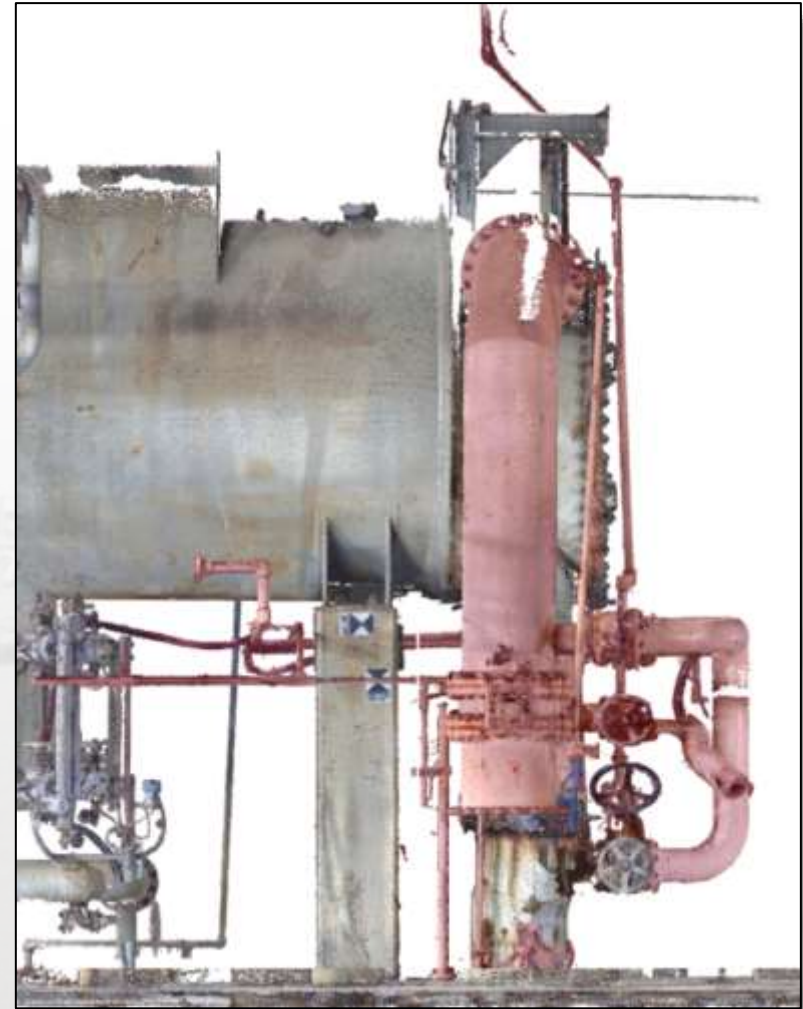
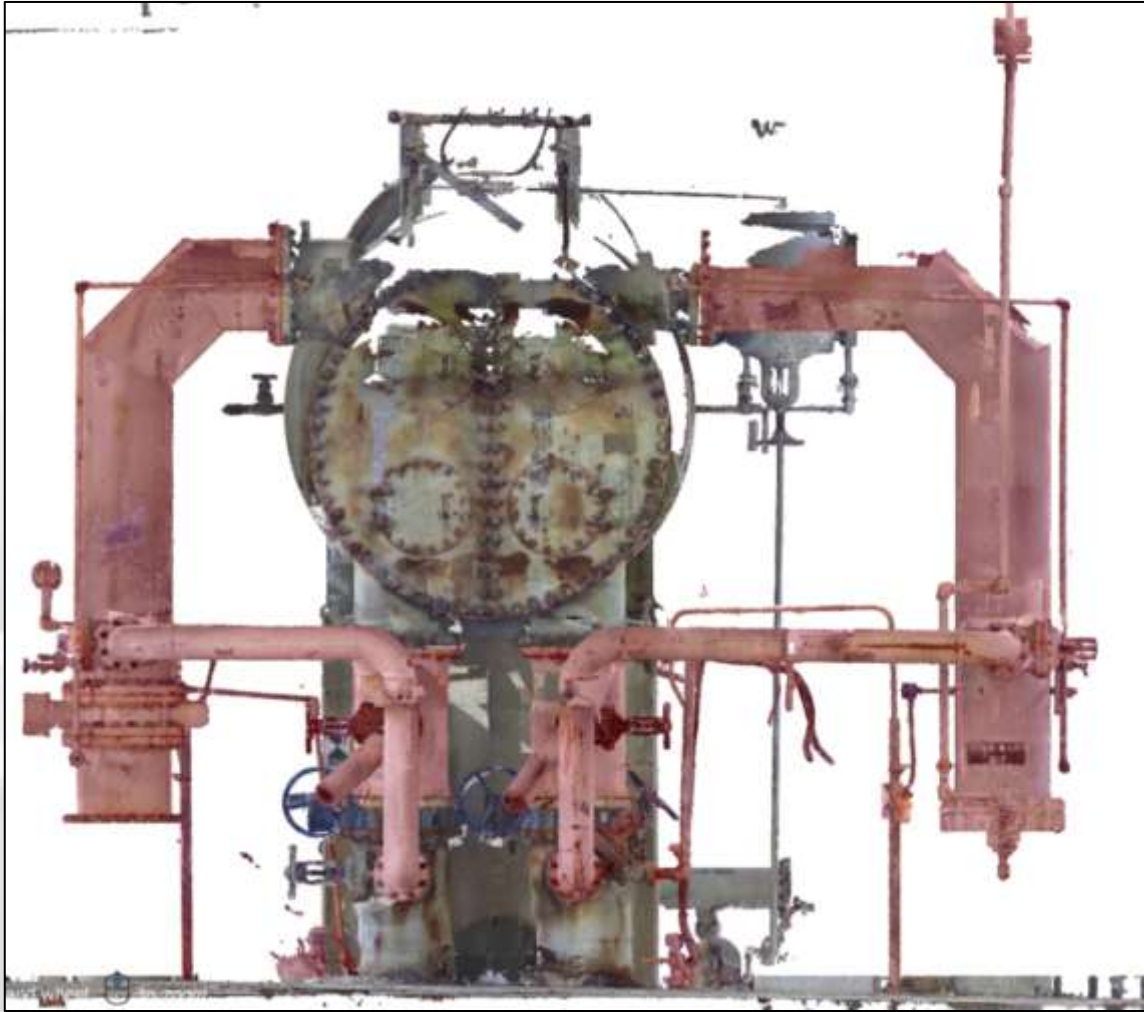
Condenser Replacement

Rigging Plan Review

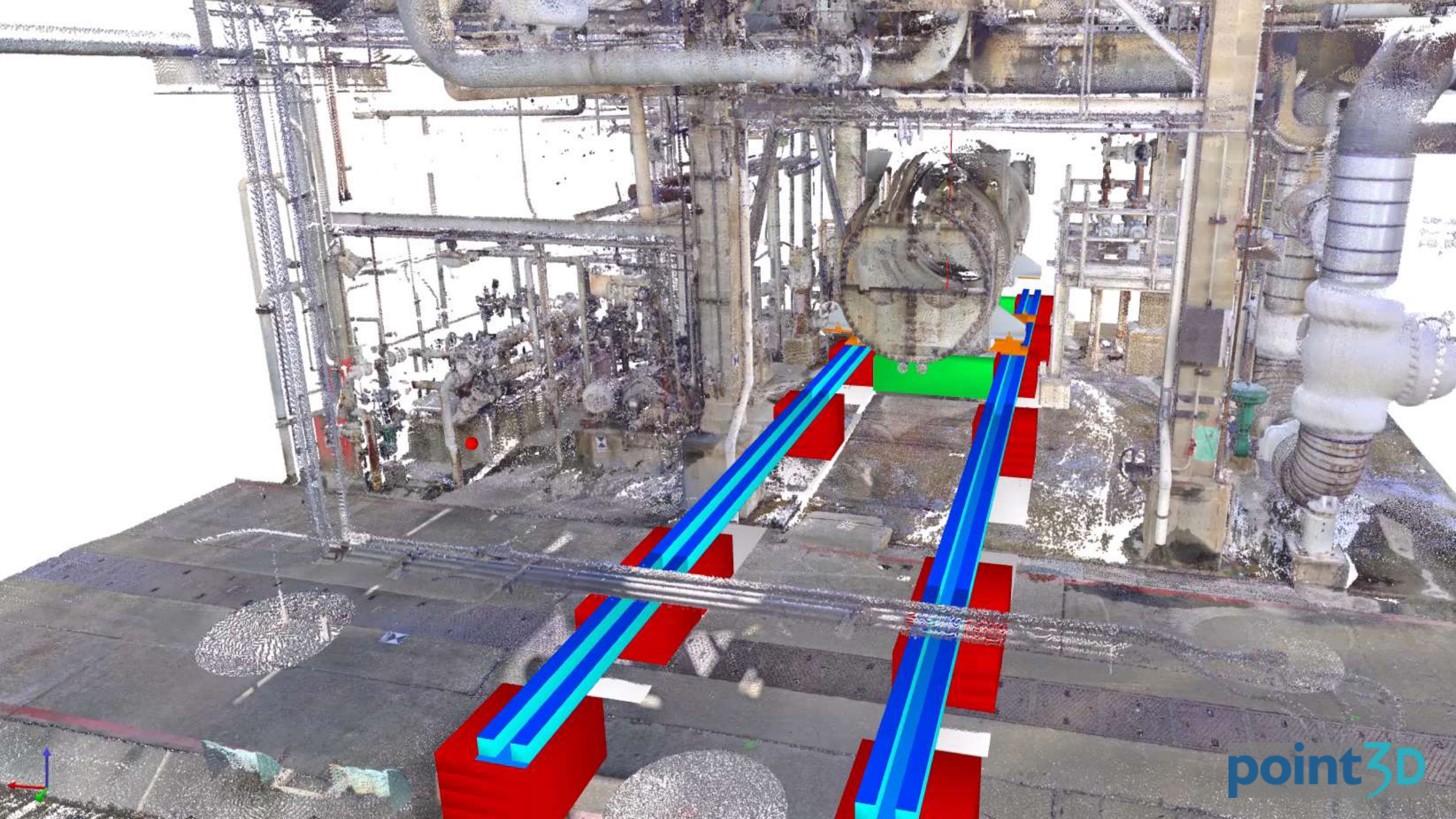
Removal and Installation Clearances and Clashes



Load Path Pre-Removal



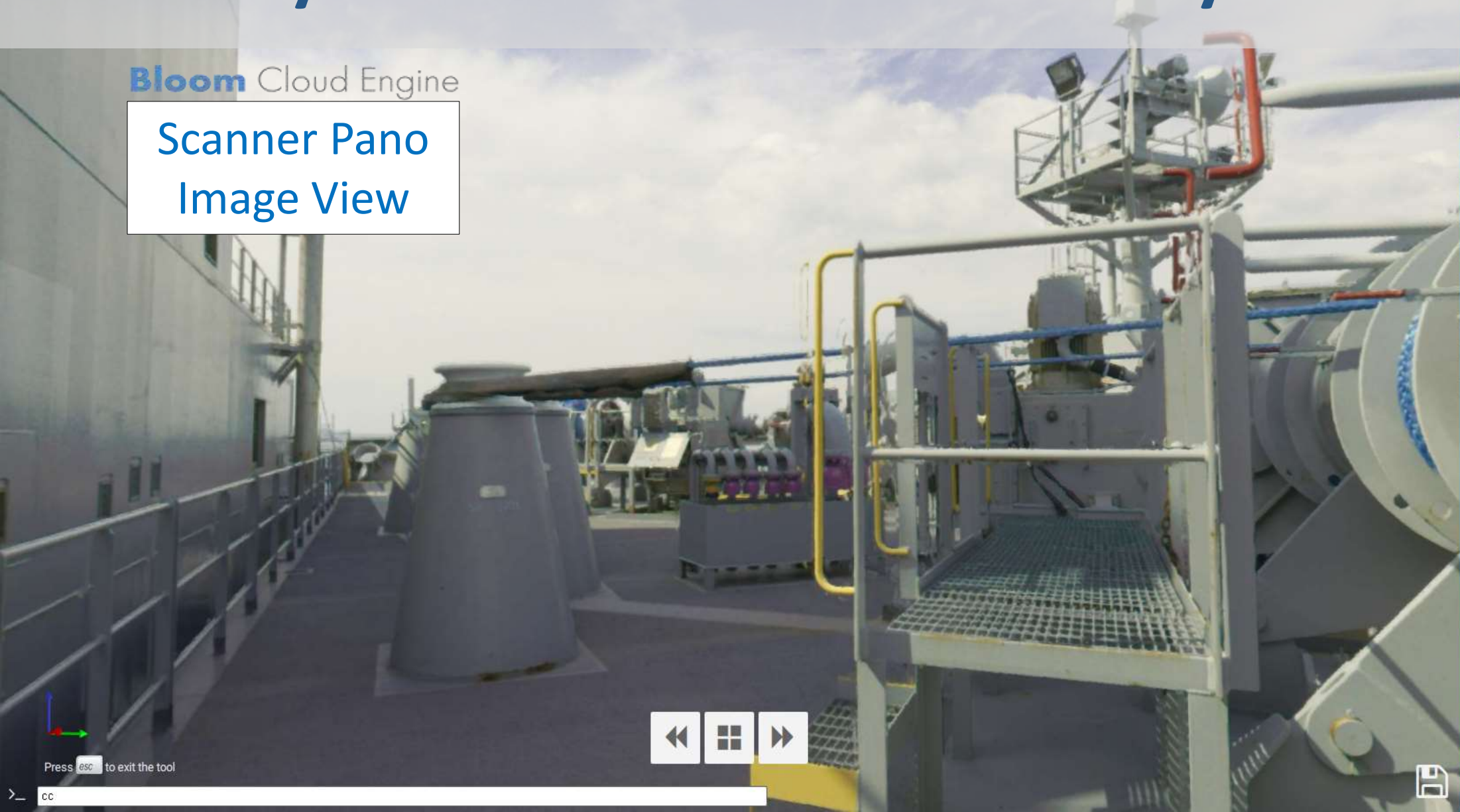
Rigging Plan Review Removal and Installation Clearances and Clashes



Lifecycle - Visualization of the Physical Asset

Bloom Cloud Engine

Scanner Pano
Image View



Reporting units
Point scale 1.0

Now showing 0 of the 22.6 M available points
Selection point: Project Coordinates
XYZ ft
XYZ range

OBJECT LIST 360

| | |
|-----------------------|--------------------------|
| ▼ IMPORTED DATA | |
| ● MK 2022- Focsle 002 | <input type="checkbox"/> |
| ● MK 2022- Focsle 003 | <input type="checkbox"/> |
| ● MK 2022- Focsle 004 | <input type="checkbox"/> |
| ▶ Focsle 004 | <input type="checkbox"/> |
| ▶ SHAPES & OBJECTS | <input type="checkbox"/> |
| ▶ VIEWPOINTS | <input type="checkbox"/> |
| ▶ ALL MARKERS | <input type="checkbox"/> |
| ▼ PUBLISH DATA | |
| ▼ 360 view group | |
| ● 2022- Focsle 002 | <input type="checkbox"/> |
| ● 2022- Focsle 003 | <input type="checkbox"/> |
| ● 2022- Focsle 004 | <input type="checkbox"/> |
| ● Ship_Focsle | <input type="checkbox"/> |

Press **esc** to exit the tool



Lifecycle - Visualization of the Physical Asset

Bloom Cloud Engine

3D Points
Image View



Reporting units: feet

Point scale: 1.0

Now showing 22.6 M of the 22.6 M available points.

Selection point: Project Coordinates

XYZ:

XYZ range:

OBJECT LIST

| IMPORTED DATA | |
|---------------------|--|
| MK 2022- Focsle 002 | |
| MK 2022- Focsle 003 | |
| MK 2022- Focsle 004 | |
| Focsle 004 | |
| SHAPES & OBJECTS | |
| VIEWPOINTS | |
| ALL MARKERS | |
| PUBLISH DATA | |
| 360 view group | |
| 2022- Focsle 002 | |
| 2022- Focsle 003 | |
| 2022- Focsle 004 | |
| Ship_Focsle | |



Lifecycle - Visualization of the Physical Asset

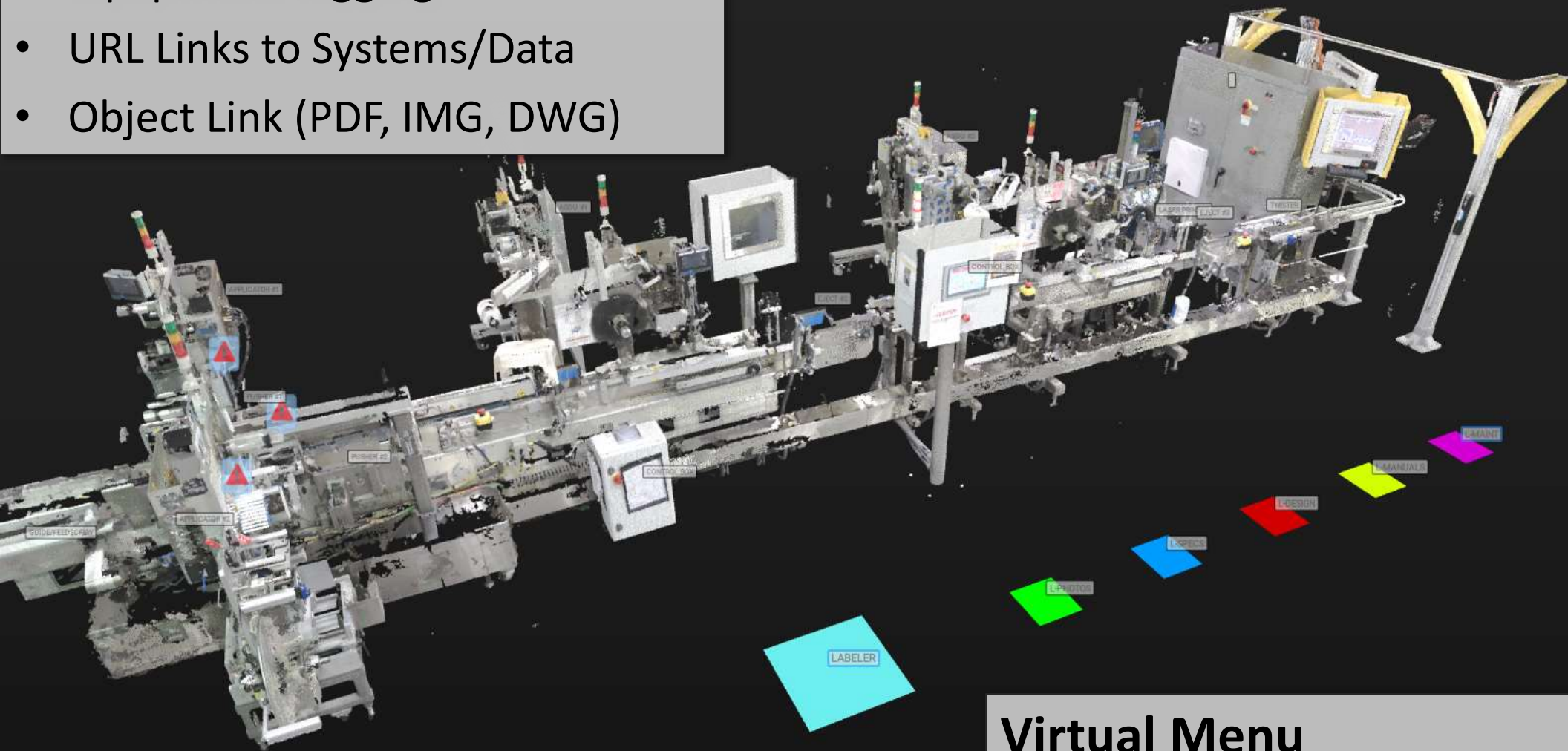
PANO Image Support

- 360 Panoramic Cameras
(linked object)
 - Ricoh Theta
 - Insta360
 - GoPro
- Tripod Color Scanners
(3D / 360 alignment)
 - Faro
 - Leica
 - Z+F (and more)
- Mobile Scanners
(embedded E57, geo-oriented)
 - GeoSLAM Horizon
 - NavVis



Lifecycle Data Linking

- Equipment Tagging
- URL Links to Systems/Data
- Object Link (PDF, IMG, DWG)



PLACE MARKER

Drag & drop a Marker onto the target.

| | | | | |
|-----|--------|--------|----------|----|
| XYZ | 21.831 | 28.292 | 0.300 | ft |
| N | 0 | 0 | 1.000000 | ft |

Properties

LABELER

Enter description...

Font size(px) 22

LABELER

Enter new html tag or URL...

OBJECT LIST

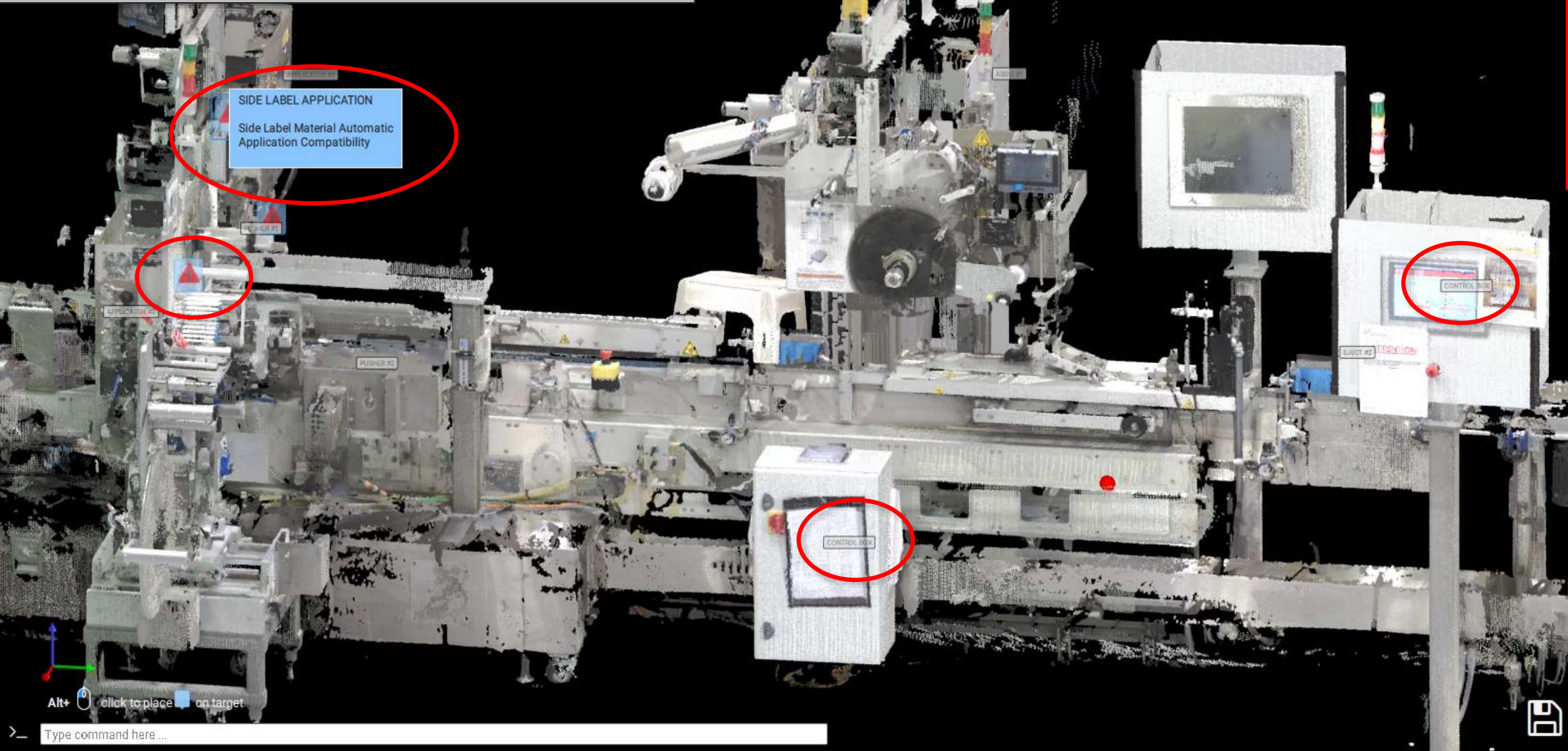
- > IMPORTED DATA
- > OPTIMIZED DATA
- > SHAPES & OBJECTS
- ▼ ALL MARKERS
 - Scan locations
 - Text
 - Deviations
- > PUBLISH DATA
- > VIEWPOINTS
- > MODEL VIEWS

Virtual Menu

- URL Links to Systems/Data

Lifecycle Data Linking

- Equipment Tagging
- URL Links to Systems/Data
- Object Link (PDF, IMG, DWG)



Reporting units: feet

Point scale: 1.0

PLACE MARKER

Drag & drop a Marker onto the target.

| | | | | |
|-----|----------|-----------|-----------|----|
| XYZ | 17.636 | 20.390 | 5.752 | ft |
| N | 0.952801 | -0.293450 | -0.077834 | ft |

Properties

SIDE LABEL APPLICATION

Side Label Material Automatic Application Compatibility

[SIDE LABEL APPLICATION](#)

Enter new html tag or URL...

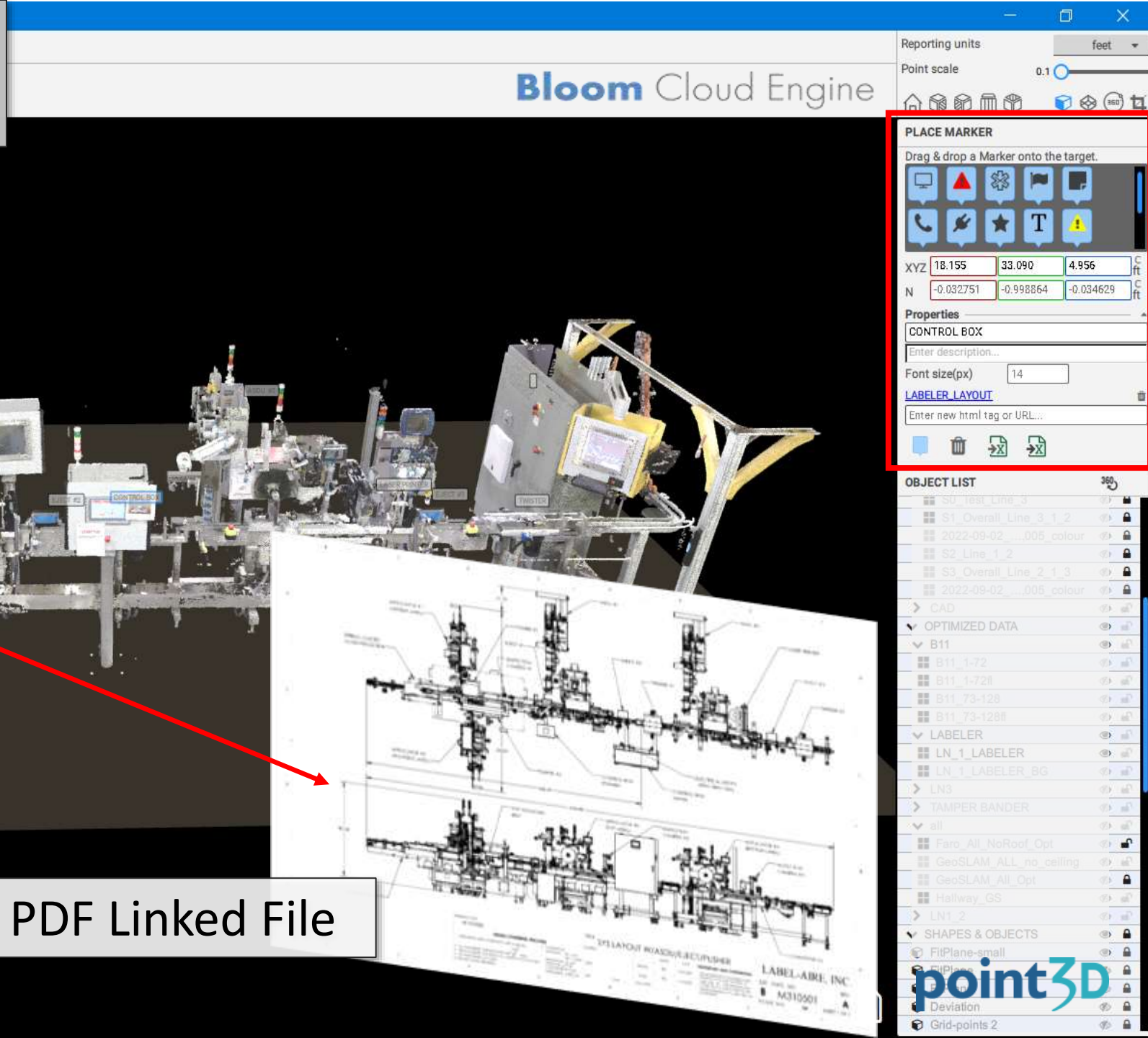
OBJECT LIST

- > IMPORTED DATA
- > OPTIMIZED DATA
- > SHAPES & OBJECTS
- > ALL MARKERS
- > PUBLISH DATA
- > VIEWPOINTS
- > MODEL VIEWS

point3D

Lifecycle Data Linking

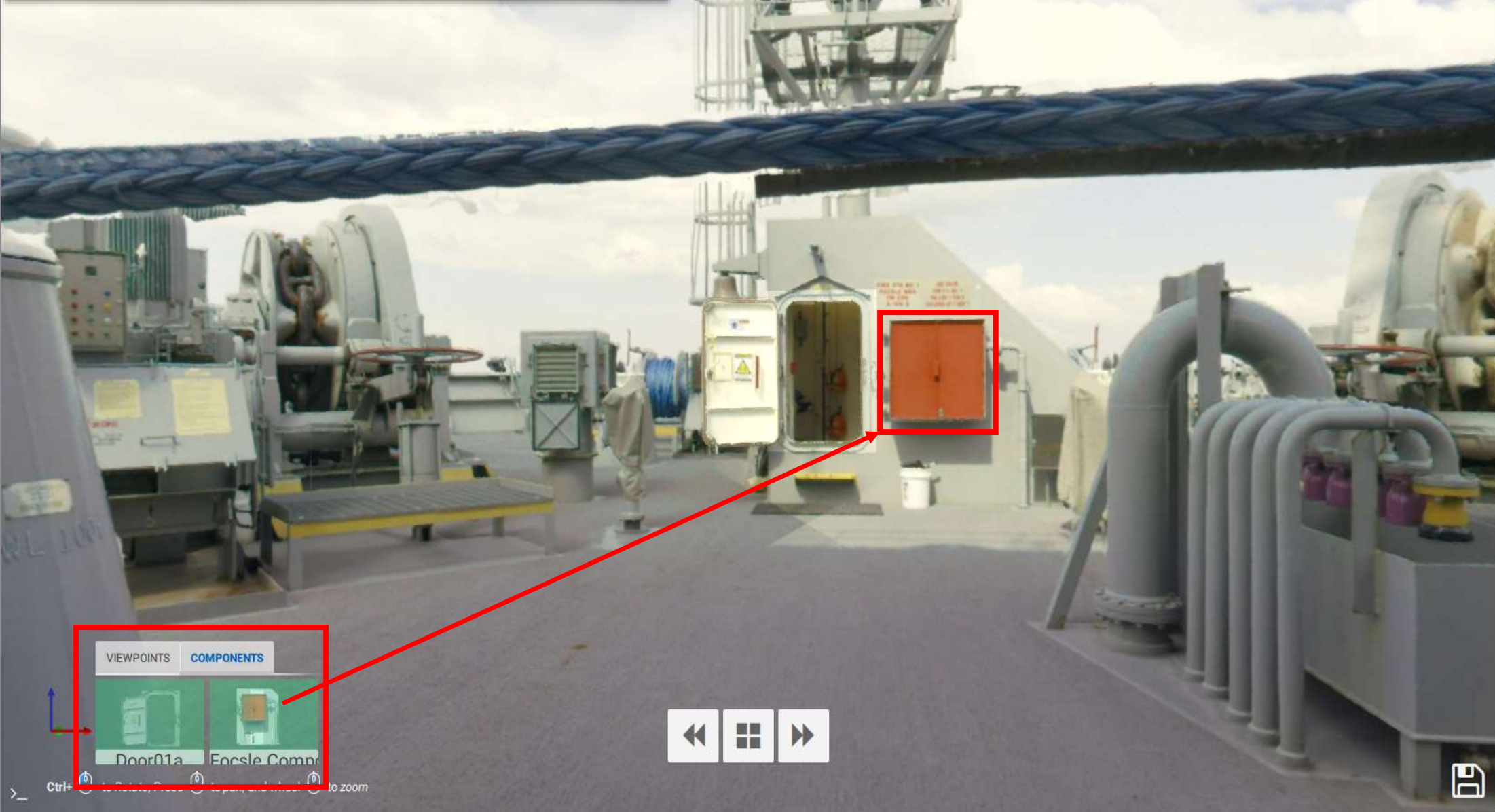
- Object Link (PDF, IMG, DWG)



PDF Linked File

Lifecycle Data Reuse

- Components (point clouds parts library)
- Layout Reconfiguration Planning



Bloom Cloud Engine

Reporting units: feet

Point scale: 0.1

COMPONENT LIBRARY

Create and manage component objects.

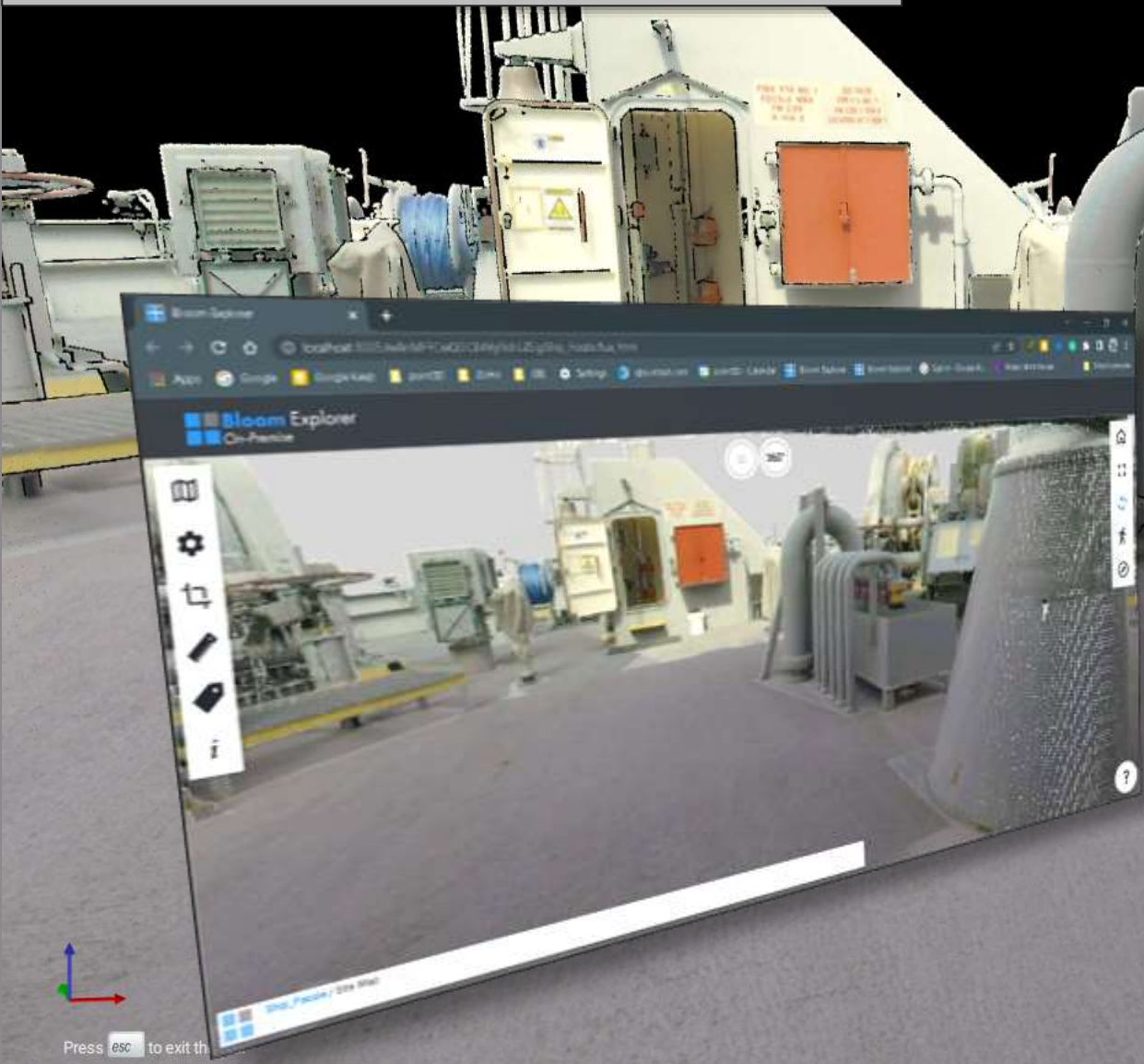
Save the object selection as a component for reuse

OBJECT LIST

- IMPORTED DATA
 - MK 2022- Focsle 002
 - MK 2022- Focsle 003
 - MK 2022- Focsle 004
- Focsle 004
 - Focsle 004
 - cabinet03
 - Model View
- SHAPES & OBJECTS
- VIEWPOINTS
- ALL MARKERS
- PUBLISH DATA
 - 360 view group
 - 2022- Focsle 002
 - 2022- Focsle 003
 - 2022- Focsle 004
 - Ship_ Focsle
 - Site Map

Lifecycle Data Collaboration

- Share to Secure Cloud
- Open Optimized Point Cloud in Browser



Bloom Cloud Engine

Reporting units: feet
Point scale: 1.0

CONTENT SHARING

PUBLISH UPDATE UPLOAD

Modify Site Map

45.0 M points are visible

Set pointcloud size: Large

Set view

Render CAD in 360 images ?
 Attach Cloud Engine package (.bcex) file

Publish

16 Mb 0 b

OBJECT LIST

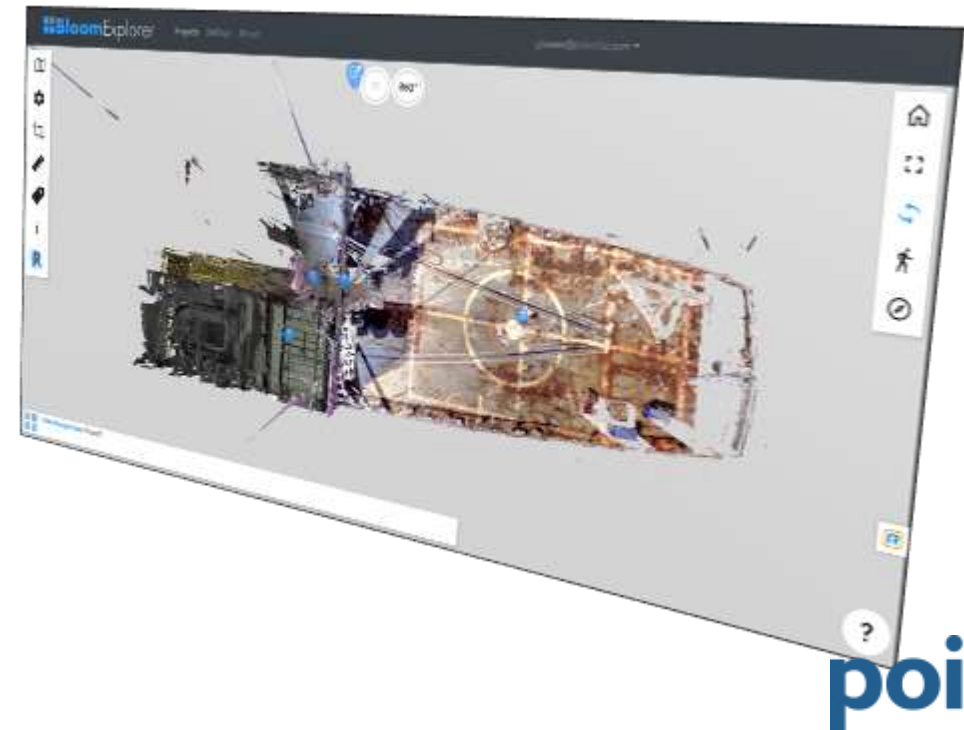
- IMPORTED DATA
 - MK 2022- Focsle 002
 - MK 2022- Focsle 003
 - MK 2022- Focsle 004
 - Focsle 004
- SHAPES & OBJECTS
- VIEWPOINTS
- ALL MARKERS
- PUBLISH DATA
 - 360 view group
 - 2022- Focsle 002
 - 2022- Focsle 003
 - 2022- Focsle 004
 - Ship_Focsle
 - Site Map

Bloom Explorer

Overview

Bloom Explorer is a hosting and collaboration solution for managing laser scans, CAD, image and asset data.

- Point Clouds, CAD, 360-Pano
- View, Measure & Markup
- Tag, Link & Attach Doc's
- Storage & Access Options
 - Secure Cloud Portal (Azure)
 - On-Premise Storage (File)



Microsoft Azure > bloomtoronto > p3d02

Sort by Date

- 

EngineRoom
by point3D Support
on Jan 05 2023
- 

FFG58_DP
by GLawes
on May 05 2022
- 

BB62_FLS_Turret
by GLawes
on May 05 2022
- 

USS_Olympia_(C6)
by GLawes
on May 05 2022
- 

Ballast
by GLawes
on May 05 2022
- 

USS_Wisconsin_BB-64
by GLawes
on Apr 24 2022
- 

Tank
by GLawes
on Apr 24 2022
- 

MainHangerDeck
by GLawes
on Apr 19 2022

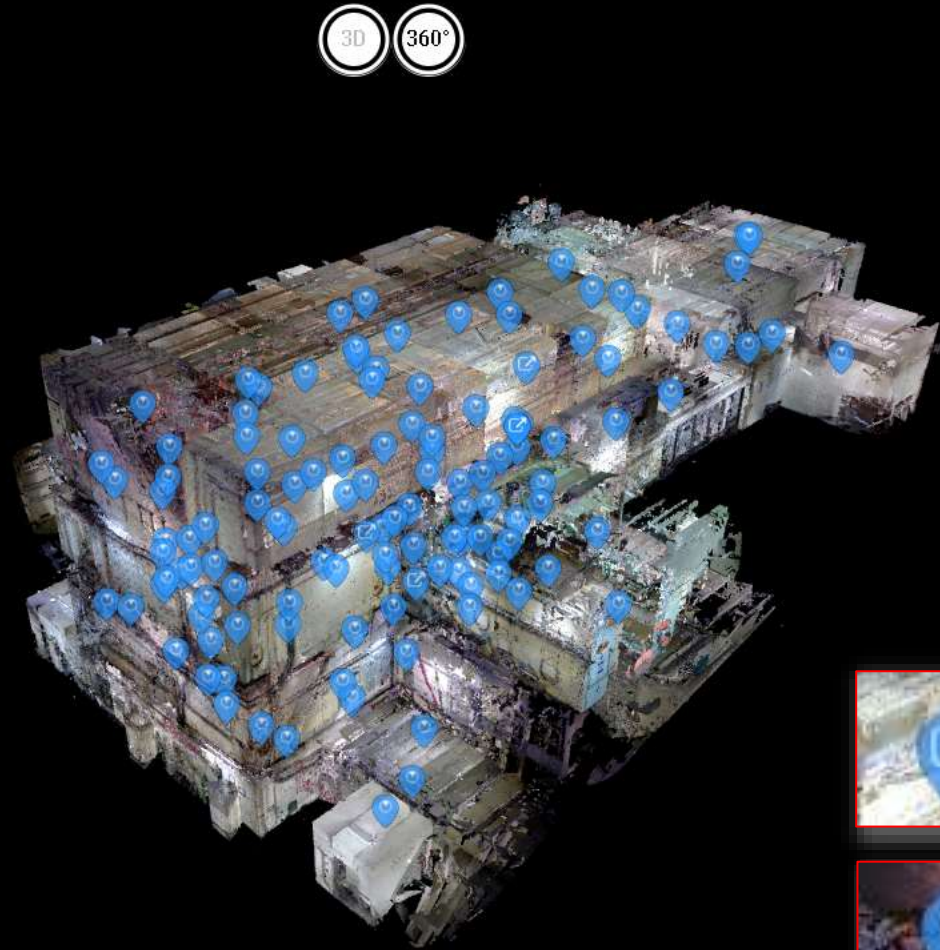
Project Selection

Bloom Explorer

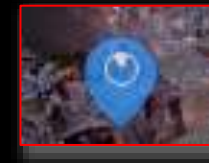
Projects on the Secure Cloud Portal (Azure)



Project Site Map



Scan Location Icon



Pano Location Icon



360 Pano Image
(linked object)



- ### Pano Support
- 360 Panoramic Cameras
 - Ricoh Theta
 - Insta360
 - GoPro
 - Tripod Color Scanners
 - Faro, Leica, Z+F
 - (and more)
 - Mobile Scanners (embedded E57)
 - GeoSLAM Horizon
 - NavVis



MainHangerDeck / D1





Linked Site Map

3D Point View

View Controls

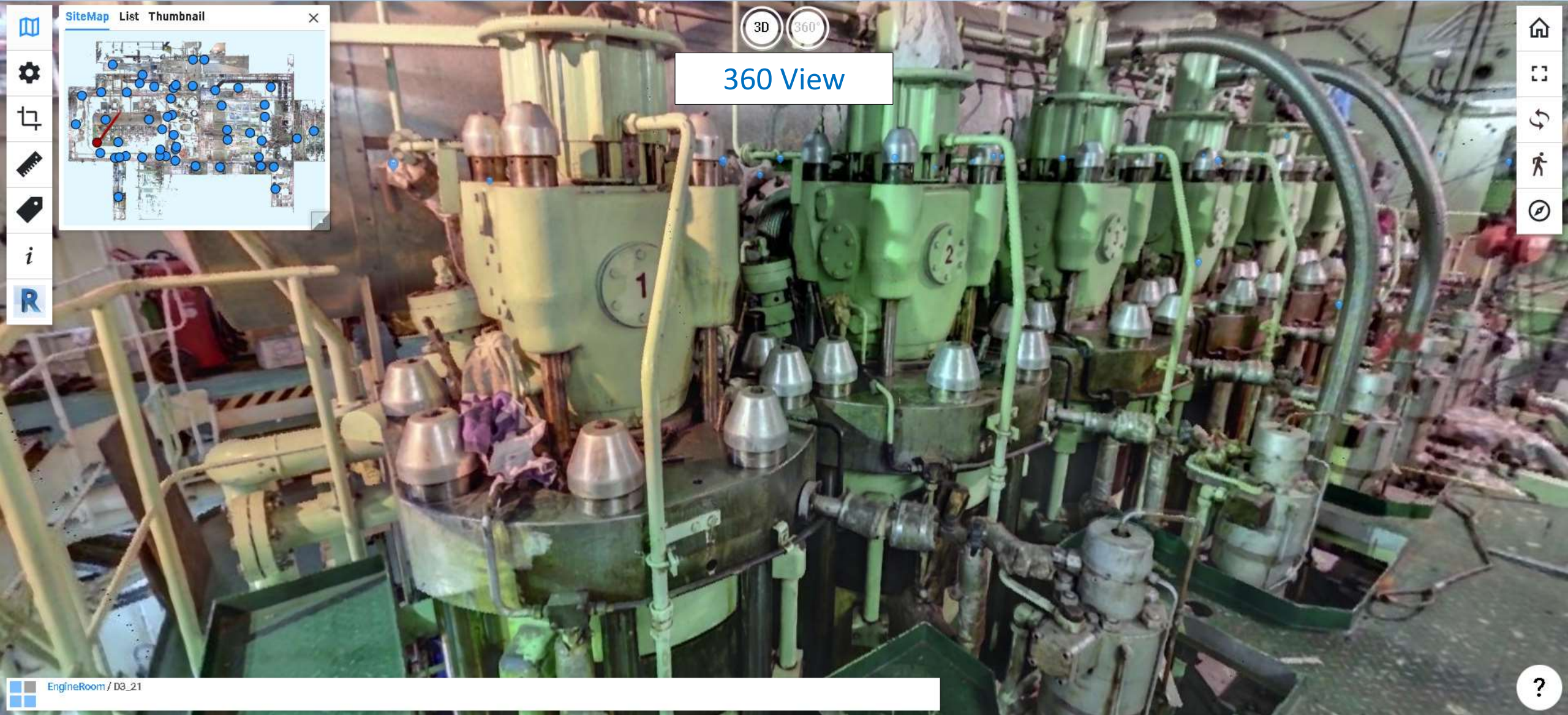


SiteMap List Thumbnail

i R

3D 360°

360 View



Navigation icons: Home, Full Screen, Refresh, Walk, Rotate

?

TAG PANEL

Search TAG...

Hide tags beyond distance

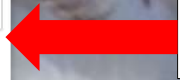
Show/Hide All

360 Link

3D Link

Attachment

Tag Settings



3D 360°

Tag Creation

- Set camera pivot
- Create tag
- Show coordinates
- Close menu

76ft 4-7/8", 18ft 9", 25ft 7-5/8"

Add title...

Add a comment...

Drop documents/link here



MEASURE TOOL [X]

Display Units ft

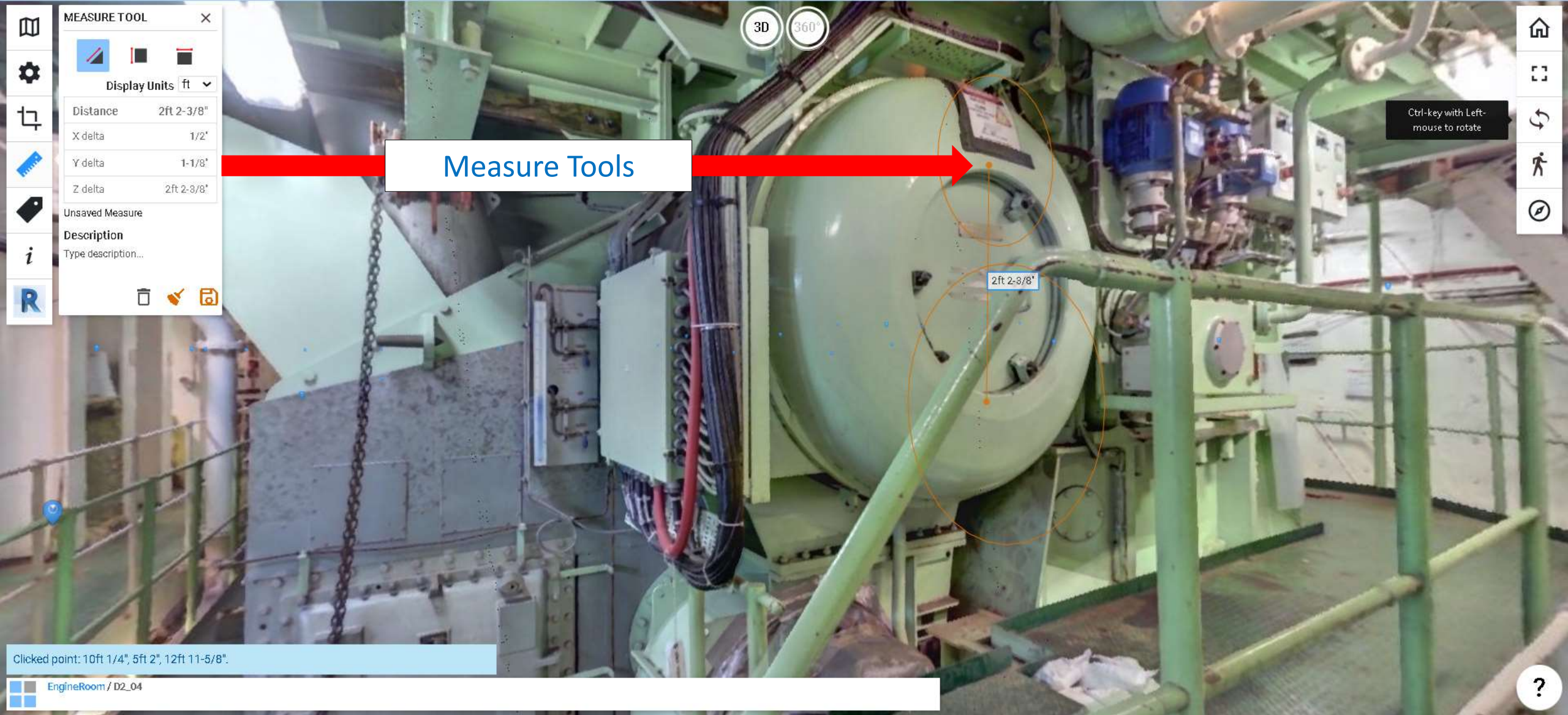
| | |
|----------|------------|
| Distance | 2ft 2-3/8" |
| X delta | 1/2' |
| Y delta | 1-1/8" |
| Z delta | 2ft 2-3/8" |

Unsaved Measure

Description
Type description...

[Icons: Erase, Confirm, Save]

Measure Tools



Ctrl-key with Left-mouse to rotate

[Home] [Full Screen] [Refresh] [Walk] [Rotate]

Clicked point: 10ft 1/4", 5ft 2", 12ft 11-5/8"

EngineRoom / D2_04



CROSS-SECTION

Navigation icons: Home, Full Screen, Refresh, Walk, Rotate.



View Sections

Bloom Explorer

Accessing Secure Bloom Portal

Local Area Network

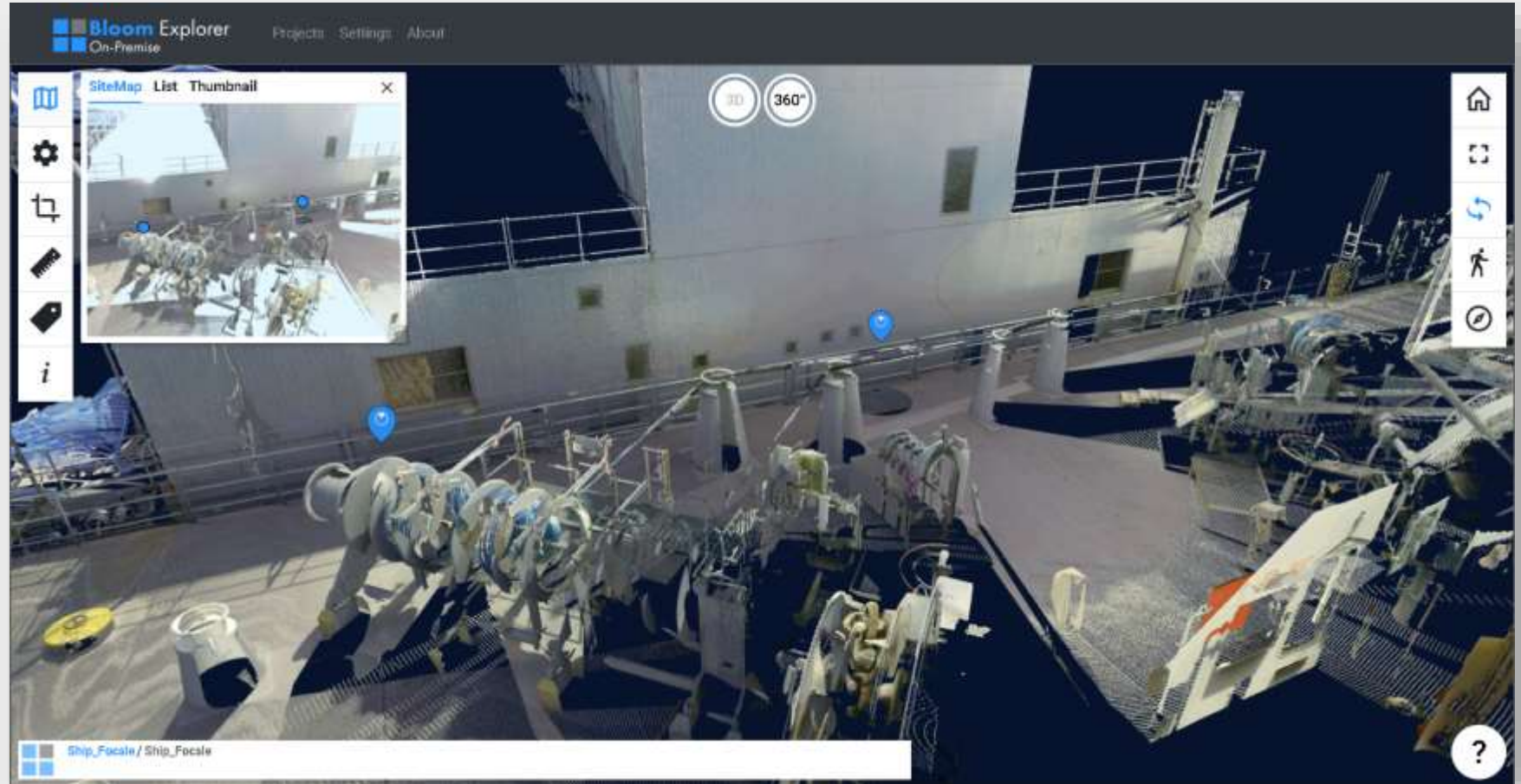
D:/Emprise/BloomExplorer_project



Ship_Focсле

by glawe

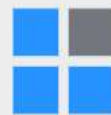
on Mar 24 2023



AS-BUILT DIGITAL TWIN

Digital Twin hosted with Microsoft Azure Cloud.

Let's Talk



Digital Twin from reality capture and design data
Microsoft Azure

Microsoft Azure > point3d > c03

Sort by Date ▾

The screenshot displays the Bloom Explorer application interface. At the top, the 'Bloom Explorer' logo and navigation links 'Projects', 'Settings', and 'About' are visible. The user's email 'glawes@point3d' is shown in the top right. The main view is a 3D model of an engine room, populated with numerous blue circular markers. A 'SiteMap' window is open on the left, showing a 2D map of the same area with the markers. The interface includes a toolbar on the left with icons for home, settings, zoom, and information. On the right, there are icons for home, full screen, refresh, and navigation. At the bottom, a status bar shows 'EngineRoom/ EngineRoom Decks 3360 links'. A '3D' and '360°' button is located above the main view.

EngineRoom
by point3D Support
on Mar 29 2023

USS_Wi
by GLawes
on Mar 29

MainHa
by GLawes
on Mar 29

**ENGINE ROOM / MAN 7S60
Marine Diesel Engine**



Project Hosting on Microsoft Azure

Security Goal - DoD Impact Level 4/5

Security Compliant Cloud



Project Hosts is a cloud solutions provider (CSP) that specializes in securing applications, data, and workloads on Azure and AWS, while ensuring compliance with regulatory standards, including DoD Impact Levels 2,4 and 5.

Cloud Compliance-as-a-Service



Compliance Inheritance

General Support System (GSS)
PaaS on top of Microsoft Azure
that handles 80% of the controls
for any application deployed on
Azure that ties into the GSS.



Compliance by Certification

Turnkey process to get certified
for DoD, FedRAMP in a short
period of time. General Support
System (GSS), organizations
inherit up to 95% of the
compliance standard controls.



Continuous Compliance

Turnkey process to get certified
for DoD, FedRAMP in a short
period of time. General Support
System (GSS), organizations
inherit up to 95% of the
compliance standard controls.

Microsoft Azure > bloomtoronto > p3d02

Sort by Date



EngineRoom
by point3D Support
on Jan 05 2023



FFG58_DP
by GLawes
on May 05 2022



BB62_FLS_Turret
by GLawes
on May 05 2022



USS_Olympia_(C6)
by GLawes
on May 05 2022




Ballast
by GLawes
on May 05 2022



USS_Wisconsin_BB-64
by GLawes
on Apr 24 2022



Tank
by GLawes
on Apr 24 2022



MainHangerDeck
by GLawes
on Apr 19 2022

Bloom Explorer + PaaS on top of Microsoft Azure

DoD Impact Level 5 Secure

Future Directions

- User and Project Driven
- Current Requests
 - Formats
 - MCAD (Solidworks, Siemens NX)
 - 360 video

CONTINUOUS DIGITAL TRANSFORMATION

Thank You and Work Safe



Greg Lawes

glawes@point3D.com

point3D.com

p 800-616-1003 x 101

m 856-457-2964

point3D

Laser Scanning Hardware, Software,
Training, Support, and Services

point3D.com | info@point3D.com | 800-616-1003