



Waterfront Redevelopment, Shipyard Operations, and Environmental Sustainability



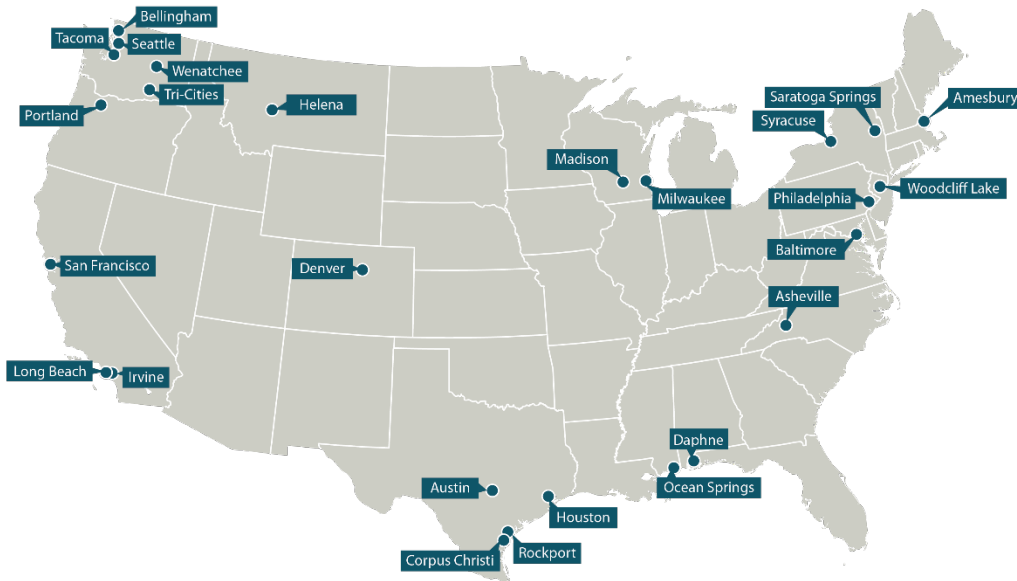
Presented by:

David Templeton and Michael Whelan, PE

March 12, 2024 | NSRP Sustainment Panel



Introduction to Anchor QEA



- National firm with offices on Pacific, Gulf, and Atlantic coasts
- Shipyards, ports, harbors, and waterfront operators make up significant portion of clientele
- Scientists, regulatory specialists, engineers, construction managers, and project strategists

Recent NSRP Activity

- 2019 1-day short course sponsored by NSRP: *Dredging Fundamentals – Shipyard Operations and Environmental Sustainability*
 - Held in Biloxi, Mississippi
 - 26 shipyard (NSRP) attendees
 - Discussed all aspects of dredging and sediment management in shipyard settings
 - Permitting, site studies, design, contracting, and CM

Overview of Shipyard-Related Technical Areas

- Waterfront Improvement
- Facility Planning and Permitting Strategies
- Coastal Protection and Waterfront Resiliency



Waterfront Improvement

- Site and process improvements
- Support for new markets
- Dredging and sediment management
- Emerging contaminants
- Demolition and decommissioning



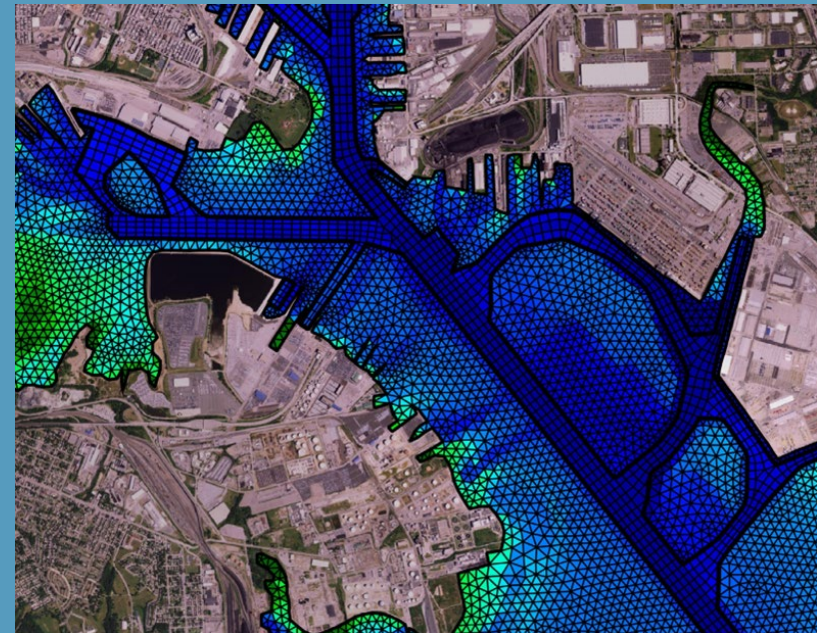


Facility Planning and Permitting Strategies

- Advance planning
- Realistic timelines
- Programmatic approaches/
project bundling
- Importance of internal
collaboration
- Air and water quality
- Community interaction
- Environmental justice

Coastal Protection and Waterfront Resiliency

- Asset protection
- Vulnerability assessments
- Storms, waves, and sea level changes
- Coastal and hydrodynamic modeling
- Long-term permitting strategies
- Cost and prioritization
- Grant opportunities



Gauging Interest in Potential Follow-Up Short Course

- Could cover dredging again or a wider scope
- Waterfront improvement considerations for shipyards
- Shipyard operations and environmental sustainability
- Developed to interest both the Sustainment Panel and the Workforce & Compliance Panel

Contacts

- David Templeton
 - Director of Shipyards and Waterfront Redevelopment
 - dtempleton@anchorqea.com
 - 206.910.4279
- Michael Whelan, PE
 - Director of Ports and Waterfront Engineering
 - mwhelan@anchorqea.com
 - 706.845.2983