

Mega Rust Planning Update

NSRP SPC

Charleston, SC



San Diego Marriott Mission Valley

- Theme: ***Corrosion Impact on the Warfighter***
- Program will start with Working Group meetings and training Tuesday morning followed by Technical Sessions Tuesday afternoon
- Wednesday morning presentations and Fleet Panel, followed by afternoon keynote, working groups, and CC Jeopardy
- Live demonstrations and equipment displays Wednesday afternoon, followed by reception in Exhibit Hall
- Thursday keynotes, Flag Panel, and technical sessions including presentations from SYSCOMs
- Free registration for Active Duty in uniform. Government employees will have to pay \$95 registration fee.

Website: <http://www.navalengineers.org/Symposia/Mega-Rust-2016>

2016 Planning Committee

Conference Chair

John Mangano, International Paint

Vice Chair

CDR Bill Partington, SURFPAC

Program Chair

Dave Zilber, QED

Demos Chair

Mark Schultz, Sherwin Williams

Technical Papers Chair

Tim Tenopir, NSWV-PhD

Ops & Arrangements Chair

Dave Zilber, QED

Exhibits Chair

Andy Vasquez, CNRMC

Financial & Registration Chair

Charlie Pfeifer

ASNE Staff

Executive Director

Leigh McCue

mccue@navalengineers.org

Program, Ops, and Arrangements

Madeline Foresman

mforesman@navalengineers.org

Exhibits/Sponsorship

Mike Huling

mhuling@navalengineers.org

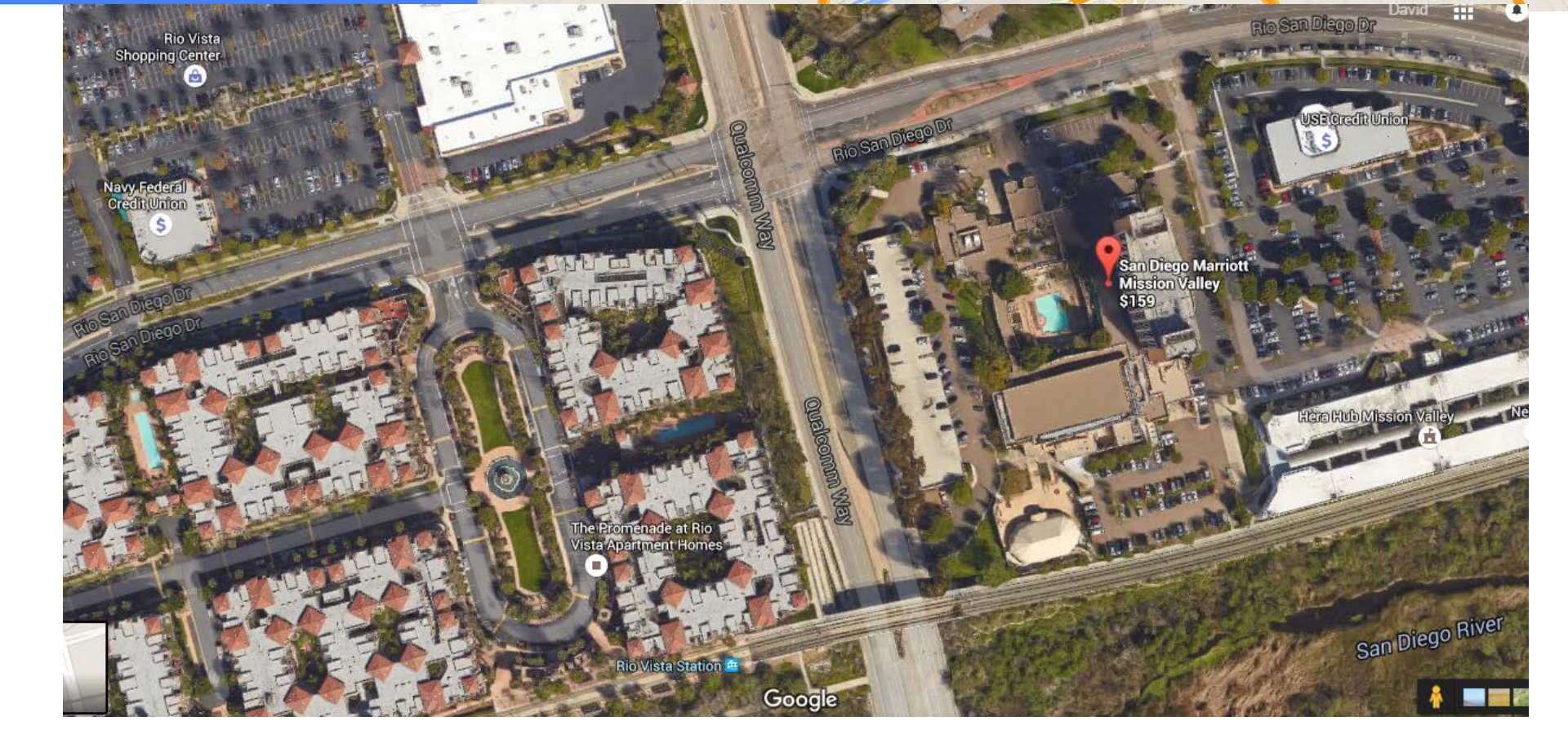
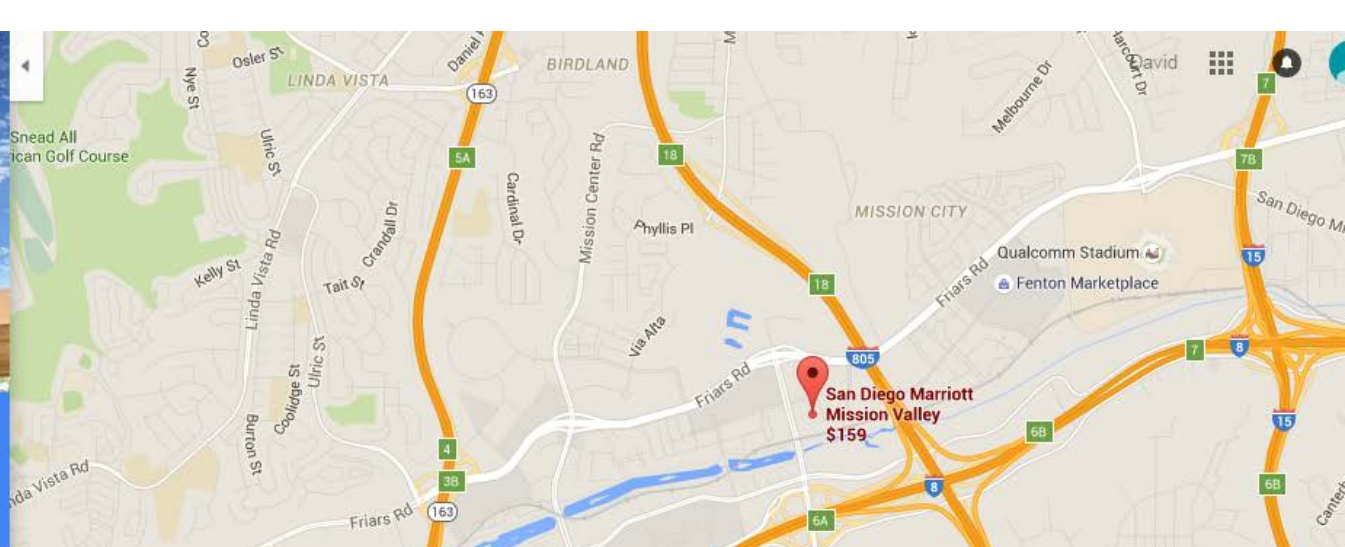
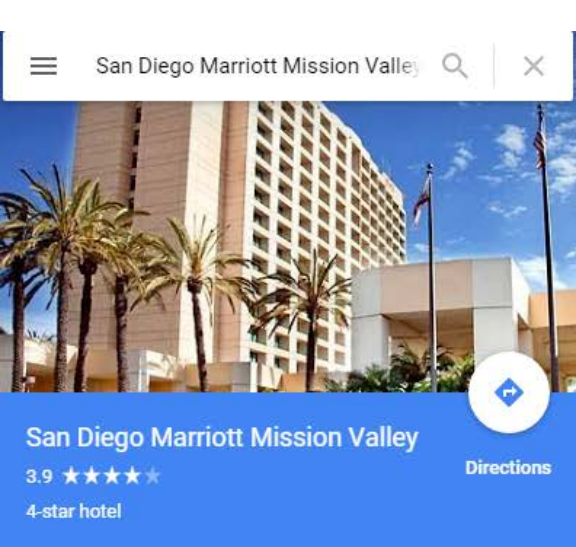
Publicity

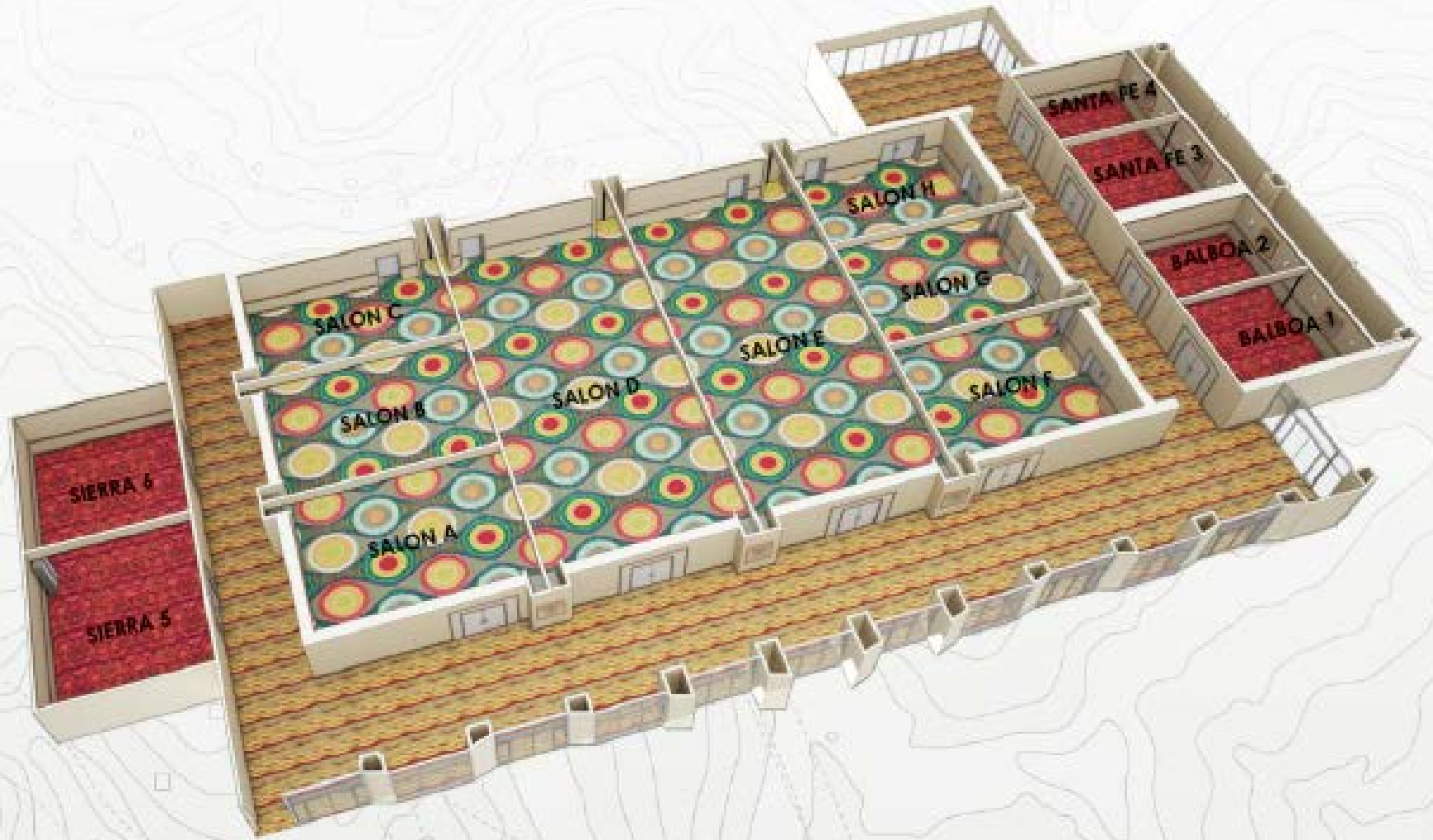
Frankie Hamme

hamme@navalengineers.org

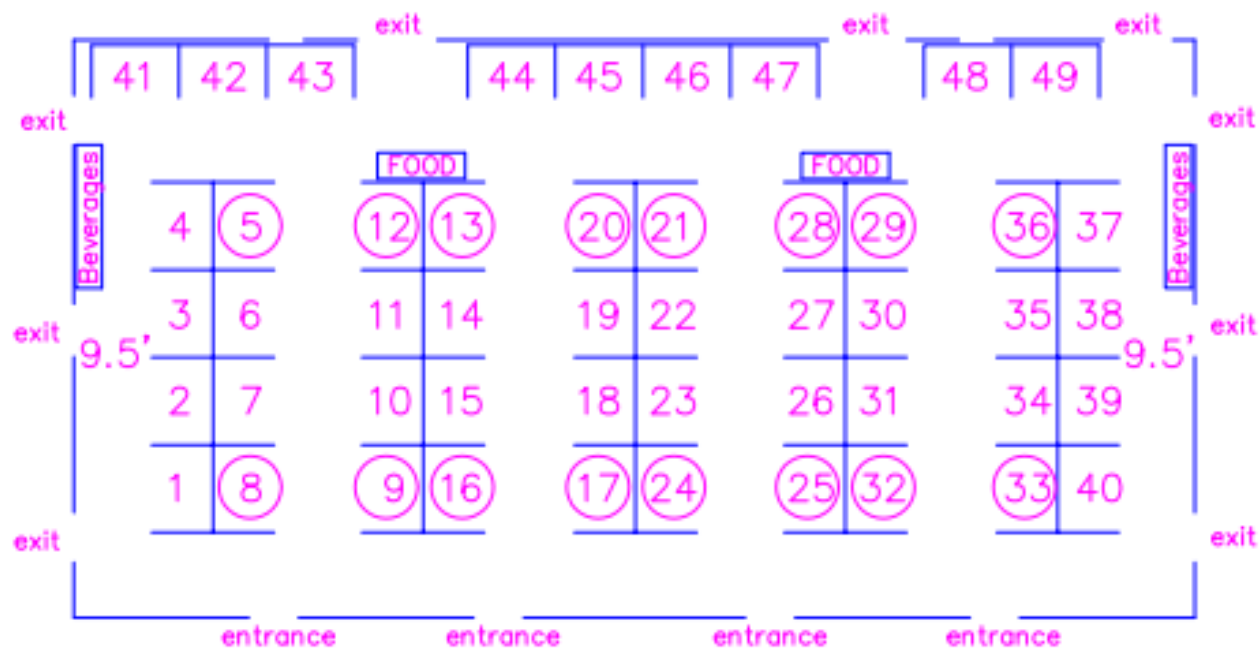
Mega Rust 2016 Program Summary

| Monday June 20 | Tuesday June 21 | Wednesday June 22 | Thursday June 24 |
|--------------------------------|---|---|---|
| | | Continental Breakfast 0700-0800 (Foyer) | Continental Breakfast 0700-0800 (Exhibits) |
| SSPC and NACE Courses begin | Intro Products to DoD 10-12 Various Group Meetings including NSRP SPC | Exhibit Hall Open 1000-1900 | Exhibit Hall Open 0700-1530 |
| | Exhibitor Setup 1300-1900 | Plenary Presentations 0800-1000 Fleet Perspectives Panel 1045- 1200 | Keynote Addresses (2) 0805-0945 |
| | Opening Remarks Technical Presentations I (9) 1300-1430 | Buffet Lunch 1200-1330 | Flag Panel 1030-1200 |
| | Break 1430-1500 | Keynote 1330-1430 Working Group Meetings, CC Jeopardy 1500-1630 | Buffet Lunch 1200-1330 |
| | Technical Presentations II (12) 1500-1700 | Demonstrations 1600-1800 | Technical Presentations III (9) 1330-1500 |
| | | Reception 1800-1930 | Technical Presentations IV (9) 1530-1700 |





Mega Rust



San Diego Marriott Mission Valley Rio Vista Ballroom

40 – 7' x 10' Booths
(Booths 1 – 40)

9 – 6' x 10' Booths
(Booths 41 – 49)

Ⓝ – Premium Booth

All Aisles 10' unless
specified



CARDEN CONVENTION
SERVICES

4225 Avocado Blvd
La Mesa, CA 91941
(619) 247-3467

Date: 1/14/2106

- **Current Exhibitors**

- [A. W. Chesterton](#) - Booth 21
- [DeFelsko Corporation](#) - Booth 33
- [DESCO Manufacturing Co., Inc.](#) - Booth 28
- [Dex-O-Tex Marine, by Crossfield Products Corp.](#) - Booth 23
- DoD Corrosion Policy & Oversight - Booth TBD
- [Fischer Technology, Inc.](#) - Booth 13
- [Glenair, Inc.](#) - Booth 16
- [Industrial Vacuum Equipment Corp.](#) - Booth 32
- [International Paint LLC](#) - Booth 24
- [Jessup Manufacturing Company](#) - Booth 18
- [Munters Corporation](#) - Booth 15
- [NACE International](#) - TBD
- [NCP Coatings, Inc.](#) - Booth 19
- [PPG Protective & Marine Coatings](#) - Booth 1
- [Sherwin-Williams](#) - Booth 17
- [Shield Technologies Corporation](#) - Booth 9
- [Sponge-Jet, Inc.](#) - Booth 44
- [SSPC: The Society for Protective Coatings](#) - Booth TBD
- [Sulzer Mixpac USA, Inc.](#) - Booth 20
- [Technofink](#) - Booth 29
- [Transhield, Inc.](#) - Booth 8
- [V.O. Baker Company](#) - Booth 14
- [Western Technology, Inc.](#) - Booth 22

EXHIBIT OPPORTUNITIES (SSPC 2016 SPECIAL – SAVE 10% OFF RATES BELOW BY FEB 15)

We want (#) ____ exhibit space(s) at the following rate:

Premium Booth Rate at \$2,495

(6' skirted table, two chairs, standard 110V power & carpeted area included)

Standard Booth Rate at \$2,195

(6' skirted table, two chairs, standard 110V power & carpeted area included)

Booth(s) preference:

1st Choice: _____

2nd Choice: _____

3rd Choice: _____

SPONSORSHIP OPPORTUNITIES (SIGN-UP BY MAR 15 AND RECEIVE 15% OFF)

We want to be a sponsor at the following level:

Platinum Level at \$5,000 (1 available)

Includes the following function:

- Exhibit Hall Grand Reception - Wednesday

Platinum Level sponsor company logo usage:

- Appropriate marketing and printed materials
- Front cover of onsite program
- Interior of onsite program
- Placement on all Mega Rust 2016 emails
- Electronic signage & walk-in slides
- Sponsored function signage (e.g. at reception)
- Various event signage (e.g. banners, sponsor boards, etc.)
- Conference website (with link to company website)
- Conference lanyards (co-branded with Mega Rust 2016)
- Online conference proceedings (emailed post event)
- Two (2) full access registrations

Gold Level at \$3,500 (2 available)

Select one of the following functions:

- Exhibit Hall Luncheon - Wednesday
- Exhibit Hall Luncheon - Thursday

Gold Level sponsor company logo usage:

- Appropriate marketing and printed materials
- Interior of onsite program
- Placement on all Mega Rust 2016 emails
- Electronic signage & walk-in slides
- Sponsored function signage (e.g. at luncheon, etc.)
- Various event signage (e.g. banners, sponsor boards, etc.)
- Conference website (with link to company website)
- One (1) full access registration

Silver Level at \$2,250 (4 available)

Select one of the following functions:

- Welcome Reception & Light Fare - Wednesday
- Continental Breakfast - Wednesday
- Continental Breakfast - Thursday
- Conference Bags - Provided to All Attendees

Silver Level sponsor company logo usage:

- Appropriate marketing and printed materials
- Interior of onsite program
- Electronic signage & walk-in slides
- Sponsored function signage (e.g. at breakfast, etc.)
- Various event signage (e.g. banners, sponsor boards, etc.)
- Conference website (with link to company website)

Bronze Level at \$1250 (6 available)

Select one of the following functions:

- Morning Snack & Coffee Break - Wednesday
- Morning Snack & Coffee Break - Thursday
- Afternoon Dessert & Beverage Break - Tuesday
- Afternoon Dessert & Beverage Break - Wednesday
- Afternoon Dessert & Beverage Break - Thursday
- Wi-Fi Access Provider - Provided to All Attendees

Bronze Level sponsor company logo usage:

- Appropriate marketing and printed materials
- Interior of onsite program
- Electronic signage & walk-in slides
- Sponsored function signage (e.g. at break, etc.)
- Various event signage (e.g. banners, sponsor boards, etc.)
- Conference website (with link to company website)

Dave Zilber's new contact info:

- Mobile – 757-266-2193
- [djzilber@gmail.com](mailto:dzilber@gmail.com)
- dzilber@qedsysinc.com